

In This Issue

[You Asked:](#)

[Announcements!](#)

[A new way of thinking..](#)

[About us](#)

Quick Links

[About Us](#)

[Our Capabilities](#)

[FAQ's](#)

[Contact Us](#)

You Asked:

Does Pro-Tech provide lead free manufacturing?

Yes, we have been providing lead free manufacturing prior to the mandatory implementation date of July 2006 set by the EU member states. Our lines are designed to switch between tin-lead and lead free processes whenever the need arises.

Interesting Fact..

Did you know that Pro-Tech's production facilities are fully ESD protected? Our extensive methods of Electrostatic Discharge prevention make certain that our chips and components are protected from electrostatic damage at all times. We do so by ensuring that all members of our production team wear proper grounding equipment as well as all of our surfaces such as our flooring, which are fully guarded for circuit protection.

JUNE 2010 NEWSLETTER

VOLUME 1, ISSUE 1

It finally feels like summer, and the change in season has also brought some exciting changes to Pro-Tech. In our first newsletter of many, we would like to explain a little more about what we do and outline some of the new projects and additions to Pro-Tech.

Announcements!

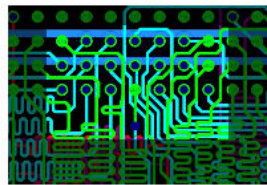
Pro-Tech is in the process of acquiring ISO 9001:2008 by end of summer. This quality management standard ensures that we top the degree of which is recognized and respected throughout the world.

Pro-Tech is also pleased to announce an upgrade to our capital equipment, including a new X-ray machine for BGA inspection. As we are increasing our use of BGAs in boards, it is important that we have a way of verifying the placement accuracy and the quality of the solder joints.



A look at Pro-Tech's X-Ray machine for BGA inspection

A new way of thinking...



New Via in Pad technique

The growing demand for smaller electronics has continuously pushed developers to think outside of the box. The new Via in Pad technique for connecting circuits on boards is something that Pro-Tech has been implementing to keep up with this trend. By placing a via (0.008 inch holes) directly in the SMT pad, the approach allows for higher component density and improved routing. The navy blue filled circles in the diagram show where this activity takes place.

About Us

Pro-Tech has been servicing the North American market for over two decades by supplying a full suite of manufacturing services to a diversified customer base. They continue to rely on us for our adaptability in being able to handle the most extraordinary requirements in a constantly changing environment of frequent engineering or production change orders. We specialize in getting your products to market in the shortest possible time frame, from design to turnkey manufacturing. For additional information, please visit our [website](#).



Click above to watch our PCB Assembly Video

We would like to thank our clients for their continued support over the last 22 years, and into the future! Please feel free to [contact us](#) with any further comments or questions.