



Pro-Tech Electronics Canada

Manufacturing Electronics Since 1988

JULY 2010 NEWSLETTER | VOL. 1, ISSUE 2

In This Issue

Industry News

protechelectronics.com

Controlled Impedance

FAQ: Why Pro-Tech?

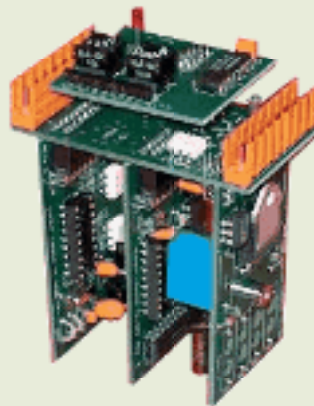
- Within our niche, we provide our clients with the best service available anywhere
- Reduced production costs mean higher profits for you
- Proven track record of high quality, meeting IPC-A-610 quality standards
- Skilled and flexible labour supply enables expansion of production as needed
- Quick turn time on purchase orders when requested
- Motivated, quality minded workforce

New Team Member..

John McDonnell has recently joined the Pro-Tech team as our North American sales rep. You can visit his website here:

June was a very eventful month in Ontario with lots of World Cup action, the G8 and G20 summits, and not to mention the earthquake which most of us experienced. We now move into July, a month which will bring some more exciting changes (most notably weather) among others around our business at Pro-Tech.

Positive EMS Industry News



There is good news for those in the EMS industry that took a big hit during last year's recession. While there was a reported 11% contraction in Electronic Manufacturing in 2009, it is estimated that the compound annual growth rate between now and 2014 will rise to 8%. With that said, not every segment will be this consistent. Senior research analyst Michael Palma states that, "Significant

expansion opportunities will present themselves, but growth will be uneven throughout the industry, with some segments faring better than others."

I suppose time will tell for the EMS industry, although it is encouraging to see production back on track.

<http://www.electronics.ca/presscenter/articles/1269/1/Worldwide-Electronic-Manufacturing-Services-Will-Return-to-Steady-But-Uneven-Growth-in-2010/Page1.html>

New Website!

Join Our Mailing List!



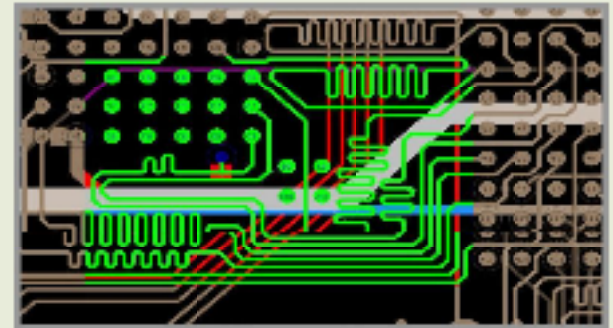
We have revamped our website with a new design and other content..

Let us know what you think!

www.protechelectronics.com

More on 'Via In Pad'...

In last month's issue we brought up this new technique which involves placing vias directly in SMT pads to allow for higher component density and improved routing. In the image on the right you can see where we matched trace lengths to control the impedance in the transmission lines. By strictly keeping the data lines length matched to 10mils we are able to achieve the best signal possible in terms of reliability and performance.



Screenshot of matched trace lengths

If you have any questions or comments regarding Pro-Tech or our specific industry, feel to contact us. Once again, thanks for reading!